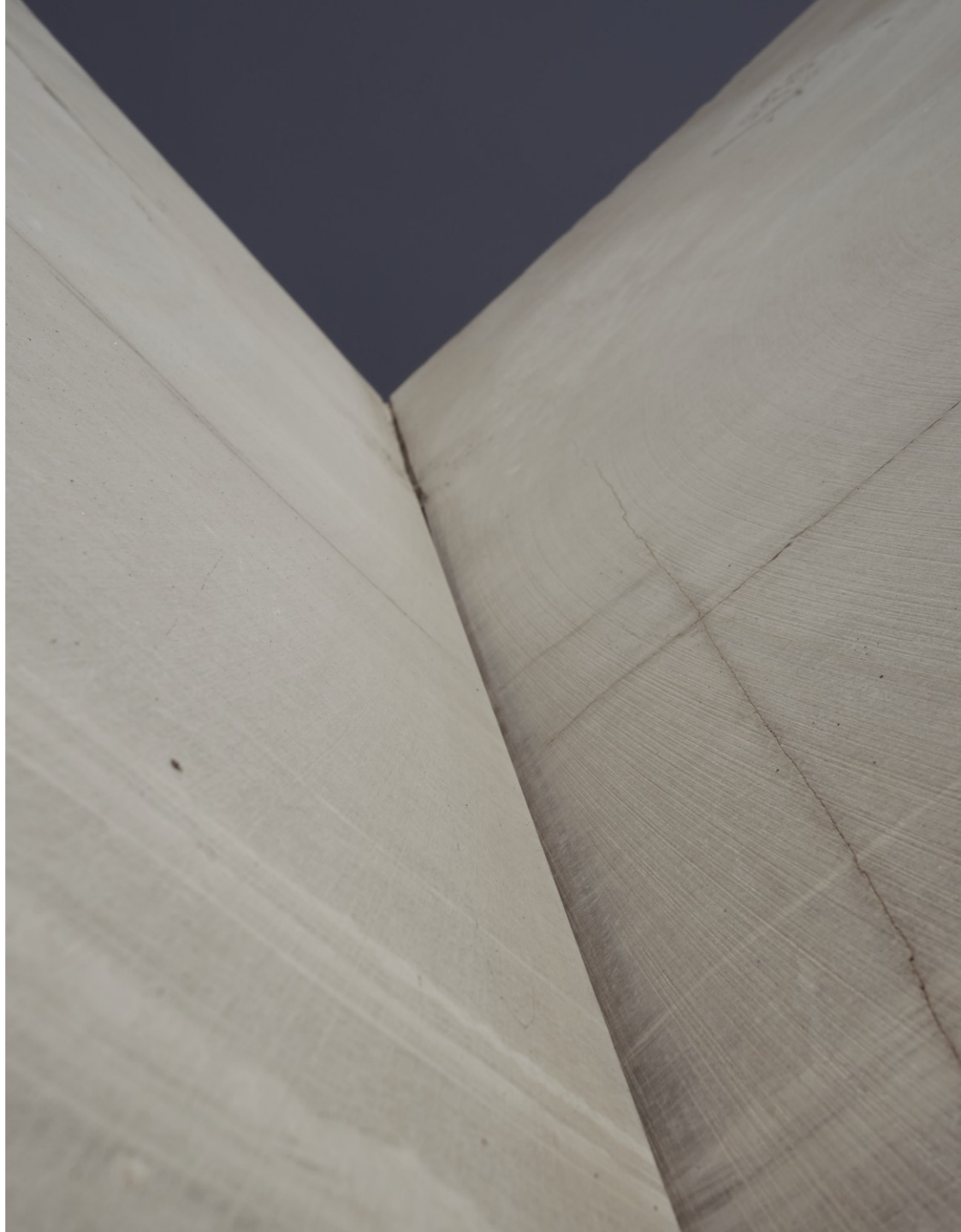




NATURAL STONES & SURFACES

**SILVER  
CLOUD**



# SILVER CLOUD

Silver Cloud is a unique marble quarried in Volos, Greece owned by Stonetech.

Standing in the perfect balance between the warm and cold colours, Silver Cloud gives a sense of luxury and timeless design in the spaces applied.

Silver Cloud has high quality characteristics and is used in numerous projects in Greece and around the world.

It has excellent frost resistance which makes it highly appealing in projects in North Europe, Russia and Canada. Due to its water absorption resistance, it is widely used in pool tiles & copings.

Stonetech supports all requests of Silver Cloud in blocks, slabs, cut to size projects and special requests.

The quarry's production capability is at about 15.000 tones per year and is expected to double the production within the course of the next 3 years.



# CHARACTERISTICS

## COLORS

Silver & Grey Shades are dominant with light grey veins and spots.

## AVAILABLE

- Blocks
- Slab
- Cut to size

## FINISHES

Polished  
Honed  
Sandblasted  
Bush hammered  
Brushed

## Best for

Flooring  
Wall cladding  
Exteriors



# CHARACTERISTICS

## Mineralogical composition

**Calcite 98%**

**Type of access:** Owned

**Extracted in:** Volos

**Country of origin:** Greece

## PHYSICAL & MECHANICAL PROPERTIES

Flexural strength: 24 Mpa

Water Absorption: 0,11 % wt

Apparent Specific weight: 2734,00 kg/m<sup>3</sup>

Abrasion Resistance: 8,48 mm

Compressive strength: 110,00 Mpa

## CHEMICAL ANALYSIS

CaO: 55,00 %

MgO: 0,45 %

SiO<sub>2</sub>: 0,05 %

Fe<sub>2</sub>O<sub>3</sub>: 0,14 %

Al<sub>2</sub>O<sub>3</sub>K: 0,40 %

K<sub>2</sub>O: 0,04 %

Na<sub>2</sub>O: 0,03 %

MnO: 0,02 %

LoI: 42,76 %

Calcite: 98 %

# QUARRY



# BLOCKS



# SLAB – SILVER CLOUD ORO VEIN CUT





# SLAB – SILVER CLOUD VEIN CUT



# SLAB – SILVER CLOUD CROSS CUT





# APPLICATION



AMANZOE RESORT



# APPLICATION



AMANZOE RESORT

# APPLICATION



EUPHORIA RETREAT



# ABOUT STONETECH

Stonotech, founded in 1975 in Heraklion Greece, is a vertically integrated company specialized in natural and engineered stones trading and processing.

With two factories, three showrooms and two owned quarries in Greece, Stonotech is an established company in the national and international market.

Our company has extensive experience in providing a wide range of solutions to architects to distinguish projects, such as luxury hotels, offices, public buildings, villas, and more, on a local and global scale.

Stonotech Pools specializes in producing decorative pool products from natural and engineering stones.

Stonotech, being a key player in engineered surfaces is the exclusive distributor of Neolith and Quarella in Greece, while it is constantly expanding its portfolio in cutting edge surfaces.



# Our Locations

---

01

## Crete

Marble Gonianaki S.A.  
Z-G Str. Industrial Area  
Heraklion, Crete-Greece  
P.C. 71601

T: +30 2810380054

---

02

## Thiva

69th km National Road  
of Athens – Lamia,  
Athens Greece,  
P.C 32009

T: +30 2262072189

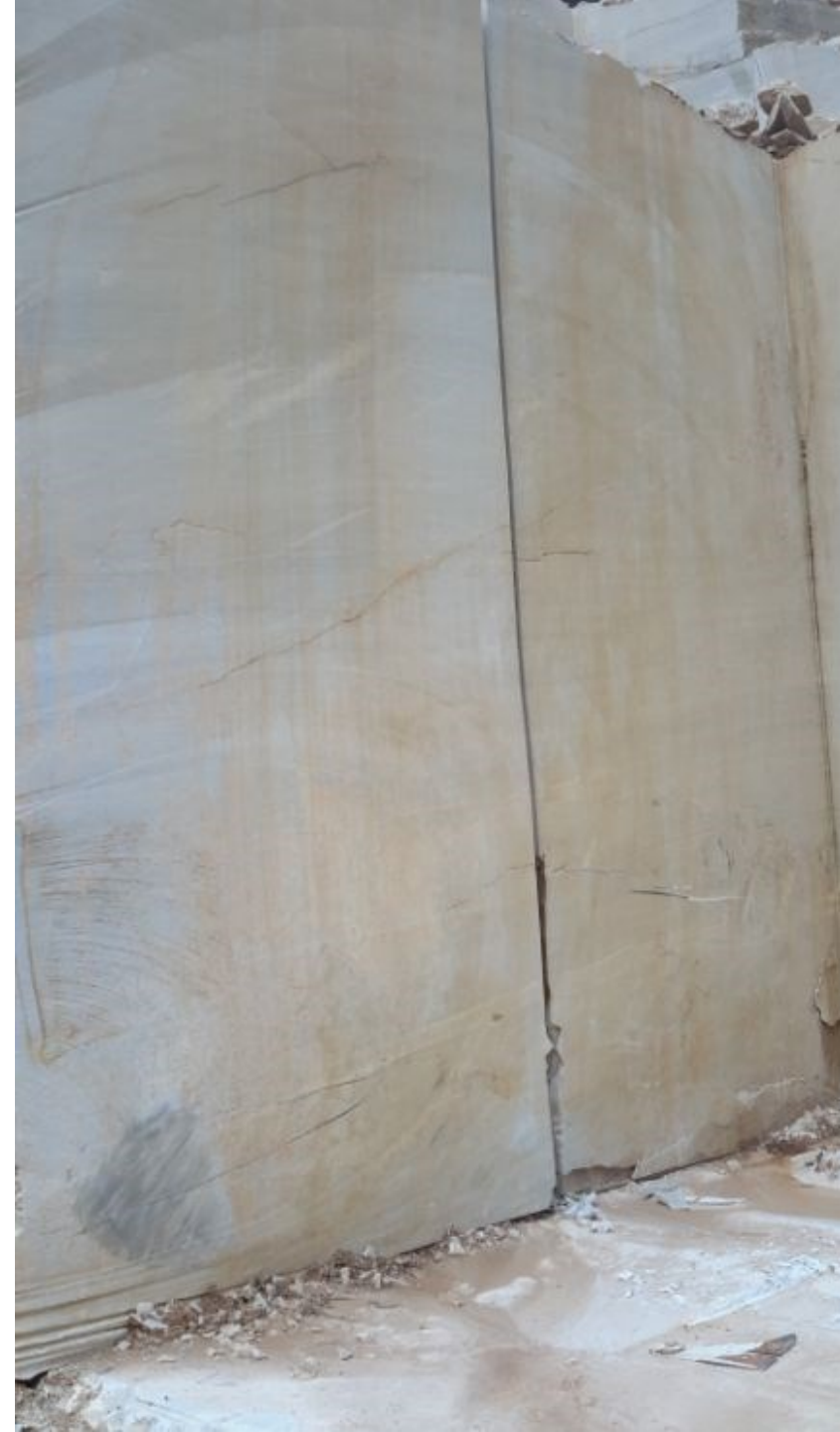
---

03

## Athens

Iridanou 16-18  
Athens Greece,  
P.C 11528

T: +30 2109945011







[info@stonetech.gr](mailto:info@stonetech.gr)